

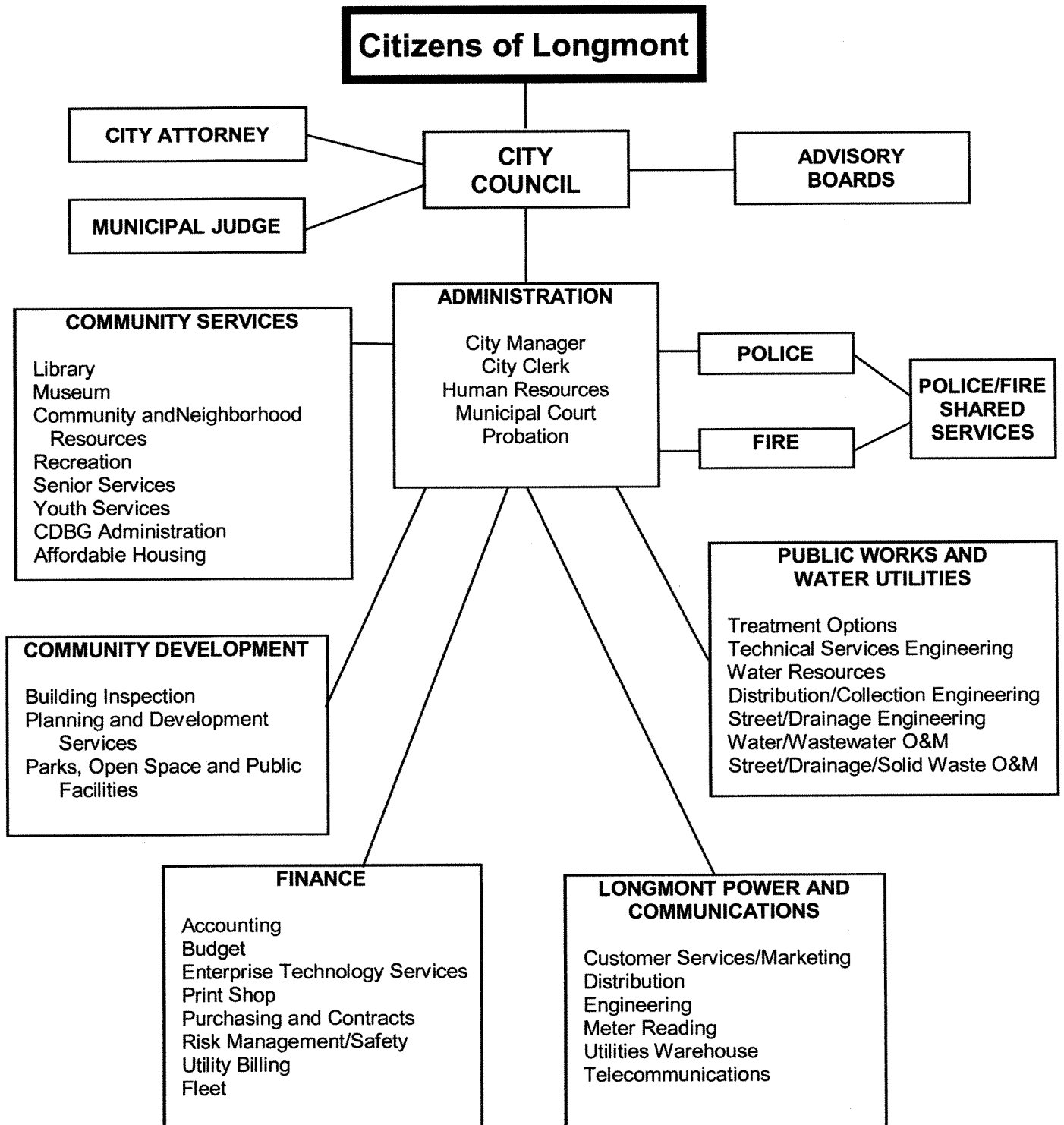
## GOVERNMENT

Longmont is a home rule city with a Council-Manager form of government. The Mayor is the presiding officer of the City Council and the head of the city government. The seven-member City Council is an elected body, which holds all legislative, and policy-making authority. The Council appoints the City Manager who is responsible for the administration of the City's departments.

The government chart shows the reporting relationships of City staff that provide various services to the residents and businesses of Longmont. Some of these services include: electric and telecommunications, water and sewer utilities; fire and police protection; parks and recreation and leisure programs and facilities; planning and development; human and cultural services; and much more.

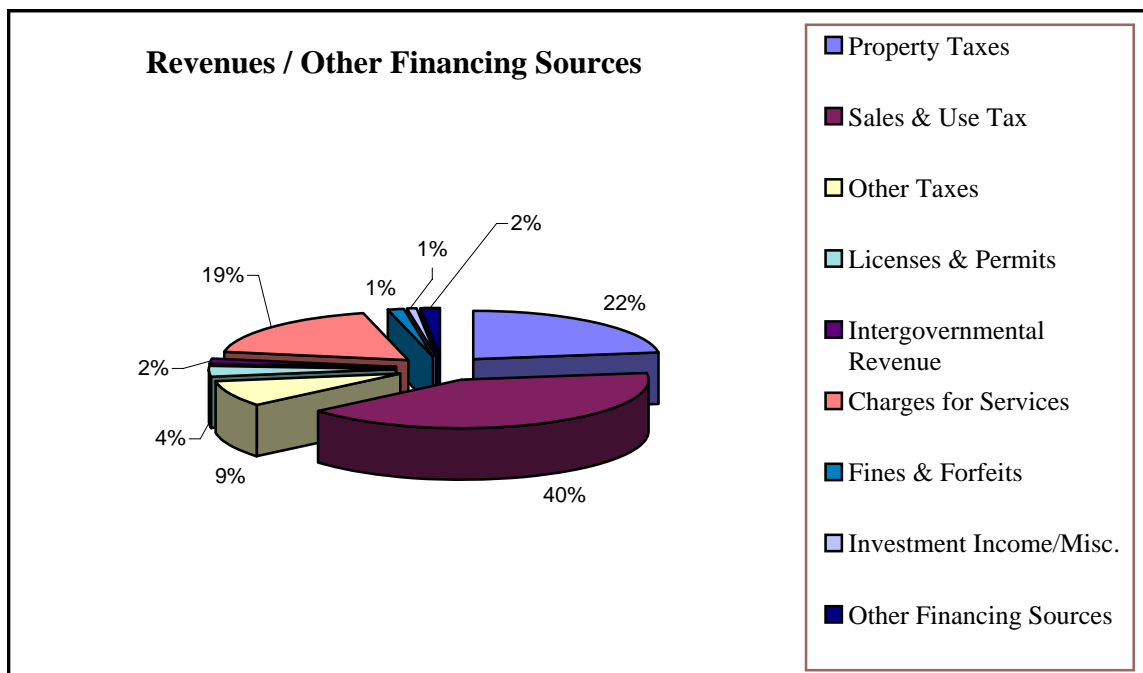
Education, one of the largest community services, is provided to Longmont residents by the St. Vrain Valley School District (SVVSD). The District schools, which are located in an area much larger than the City's area, educate nearly 24,000 students annually.

# LONGMONT CITY GOVERNMENT ORGANIZATIONAL CHART



### GENERAL FUND BUDGETED REVENUES - 2005

Revenues/Other Financing Sources	Amount	Percent of Total	Increase/(Decrease) from 2004
Property Taxes	12,734,493	22.7%	277,990
Sales & Use Tax	23,181,626	41.0%	276,337
Other Taxes	4,769,336	8.5%	330,919
Licenses & Permits	1,973,059	3.5%	(129,131)
Intergovernmental Revenue	897,154	1.6%	144,862
Charges for Services	10,323,804	18.4%	321,245
Fines & Forfeits	721,163	1.3%	77,644
Investment Income/Misc.	484,425	0.9%	139,949
Other Financing Sources	932,755	1.7%	881,400
Total			56,017,815

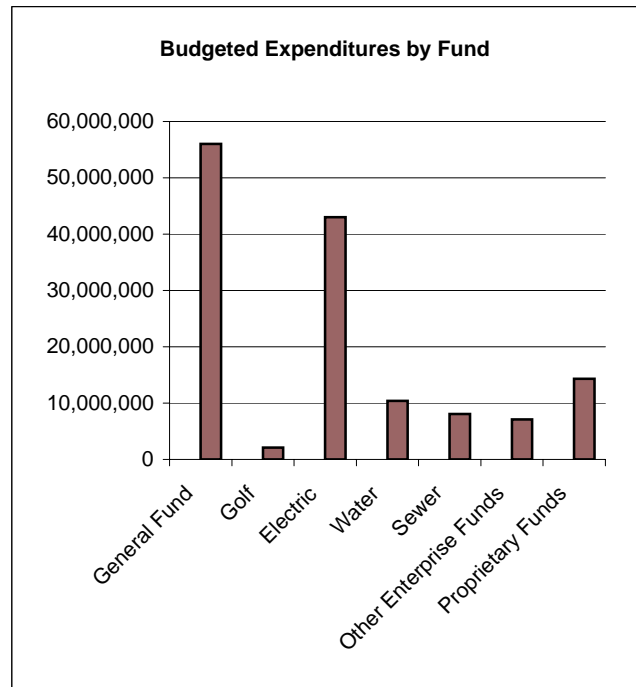


Source: City of Longmont Comprehensive Annual Financial Report

### BUDGETED EXPENDITURES BY FUND

Fund	Expenditures
General Fund	\$ 56,046,817
Golf	\$ 2,123,502
Electric	\$ 42,991,724
Water	\$ 10,386,841
Sewer	\$ 8,073,622
Other Enterprise Funds	\$ 7,110,055
Proprietary Funds	\$ 14,316,893

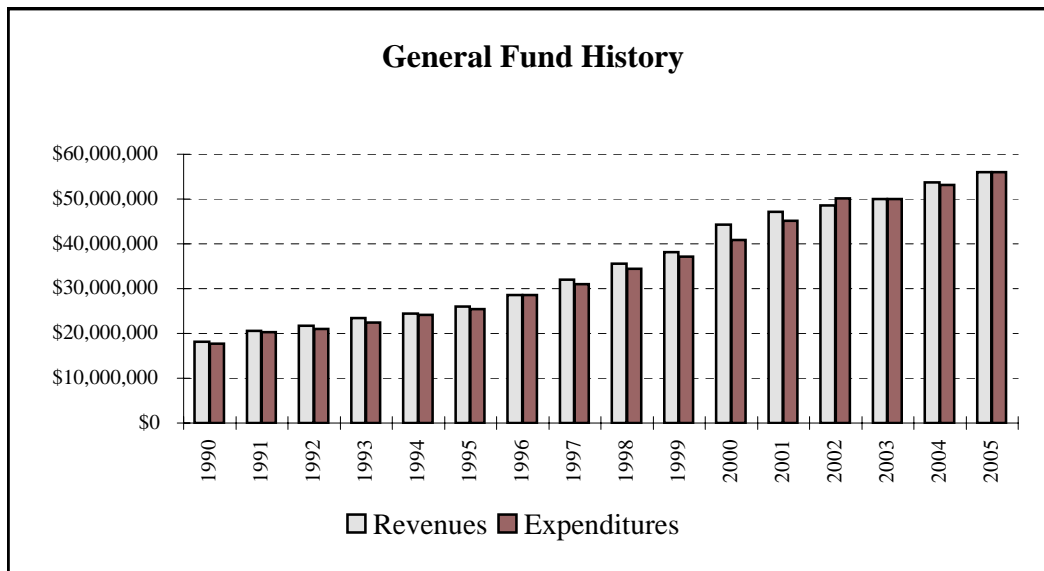
<u>Proprietary Funds</u>	
Conservation Trusts	\$ 574,608
Park Improvement	\$ 1,740,537
General Improvement District #1	\$ 94,107
Comm. Develop. Block Grants	\$ 698,667
Downtown Parking	\$ 50,768
Police Seizures	\$ 39,735
Prevention Education	\$ 21,140
Art in Public Places	\$ 88,199
Youth Services	\$ 85,764
Transportation CIF	\$ 1,687,993
Public Buildings CIF	\$ 498,787
Electric CIF	\$ 61,170
Water Acquisition	\$ 6,697
Raw Water Storage	\$ 14,518
Sewer Construction	\$ 1,336,775
Library Services	\$ 29,241
Museum Services	\$ 52,051
Historic Preservation	\$ 60
Callahan House	\$ 55,300
Senior Services	\$ 117,286
Parks Grants & Donations	\$ 526,842
Affordable Housing	\$ 885,709
Open Space	\$ 5,544,376
Library Trust	\$ 25
Museum Trust	\$ 21,654
Jones Foundation Trust	\$ 84,884
<b>Total Proprietary Fund Expenditures</b>	<b>\$ 14,316,893</b>



Source: City of Longmont  
Comprehensive Annual Financial  
Report

### GENERAL FUND HISTORY

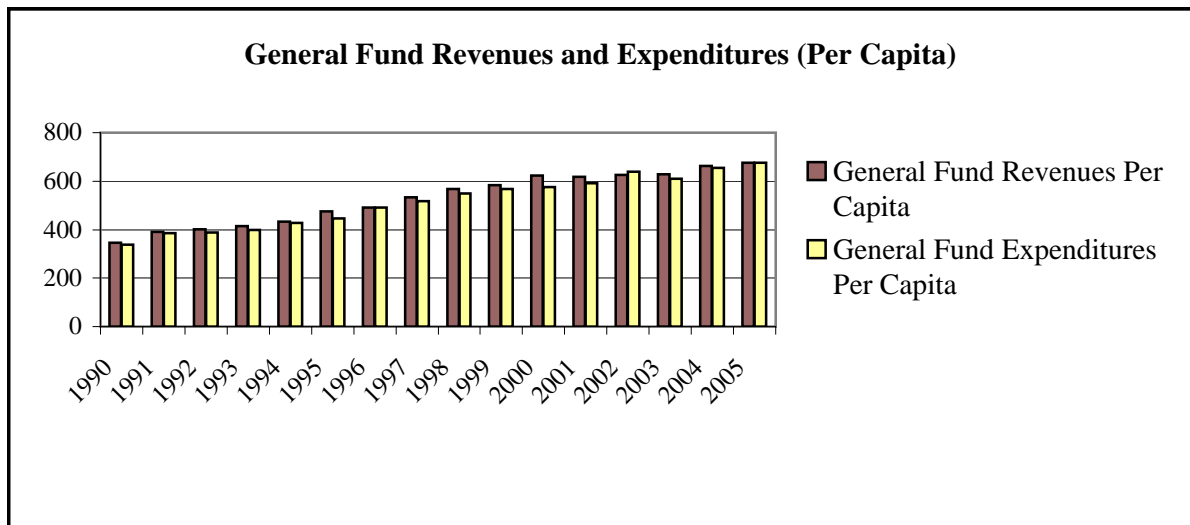
General Fund	Revenues	Expenditures
1990	\$18,200,000	\$17,753,086
1991	\$20,535,835	\$20,274,017
1992	\$21,699,830	\$20,994,789
1993	\$23,371,463	\$22,402,180
1994	\$24,431,417	\$24,159,971
1995	\$25,955,548	\$25,454,087
1996	\$28,627,855	\$28,630,217
1997	\$32,022,570	\$31,057,762
1998	\$35,627,414	\$34,380,118
1999	\$38,186,600	\$37,135,340
2000	\$44,348,146	\$40,926,369
2001	\$47,119,470	\$45,116,576
2002	\$48,518,680	\$50,083,143
2003	\$49,928,795	\$49,961,076
2004	\$53,692,748	\$53,127,567
2005	\$56,017,815	\$56,046,817



Source: City of Longmont Comprehensive Annual Financial Report

## GENERAL FUND REVENUES AND EXPENDITURES (PER CAPITA)

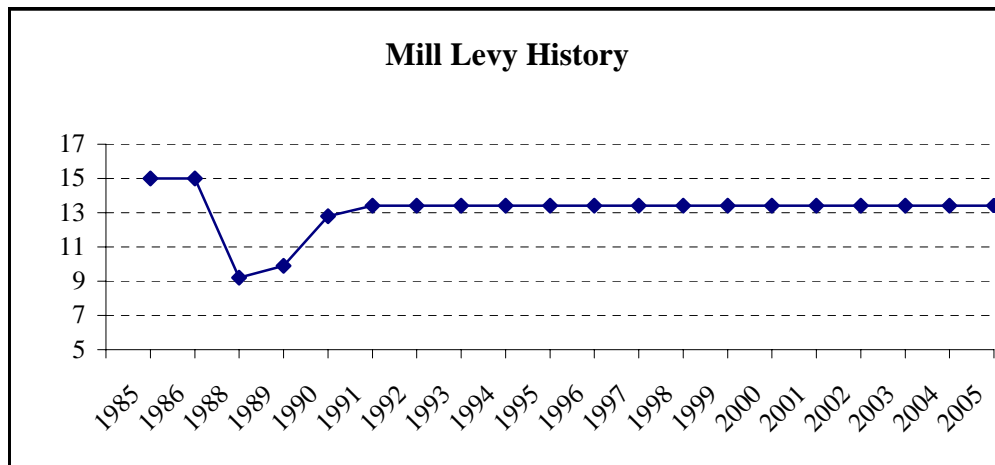
Year	General Fund Revenues Per Capita	General Fund Expenditures Per Capita
1990	347	339
1991	389	385
1992	400	387
1993	416	398
1994	432	427
1995	474	445
1996	492	492
1997	533	517
1998	567	548
1999	584	567
2000	623	576
2001	619	592
2002	626	639
2003	629	611
2004	662	655
2005	677	677



Source: City of Longmont Comprehensive Annual Financial Report

### MILL LEVY HISTORY

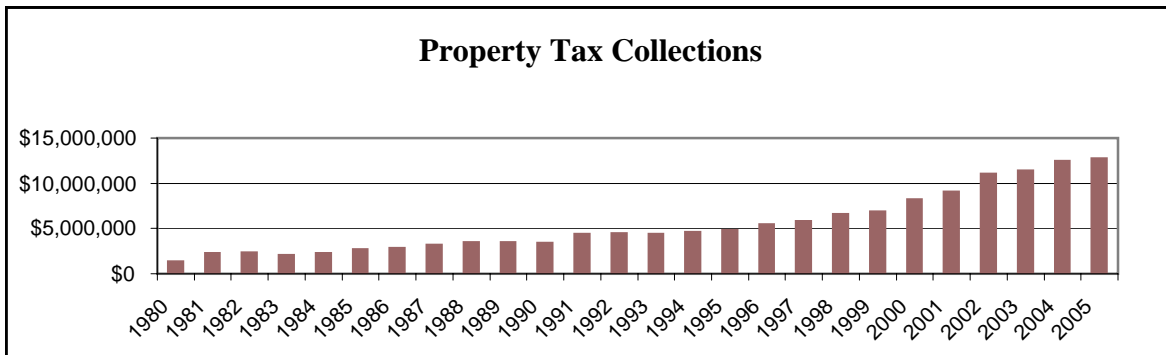
Year	Mill Levy
1985	15
1986	15
1988	9.2
1989	9.9
1990	12.80
1991	13.42
1992	13.42
1993	13.42
1994	13.42
1995	13.42
1996	13.42
1997	13.42
1998	13.42
1999	13.42
2000	13.42
2001	13.42
2002	13.42
2003	13.42
2004	13.42
2005	13.42



Source: City of Longmont Comprehensive Annual Financial Report

## GENERAL FUND ASSESSED VALUATION AND PROPERTY TAX COLLECTIONS

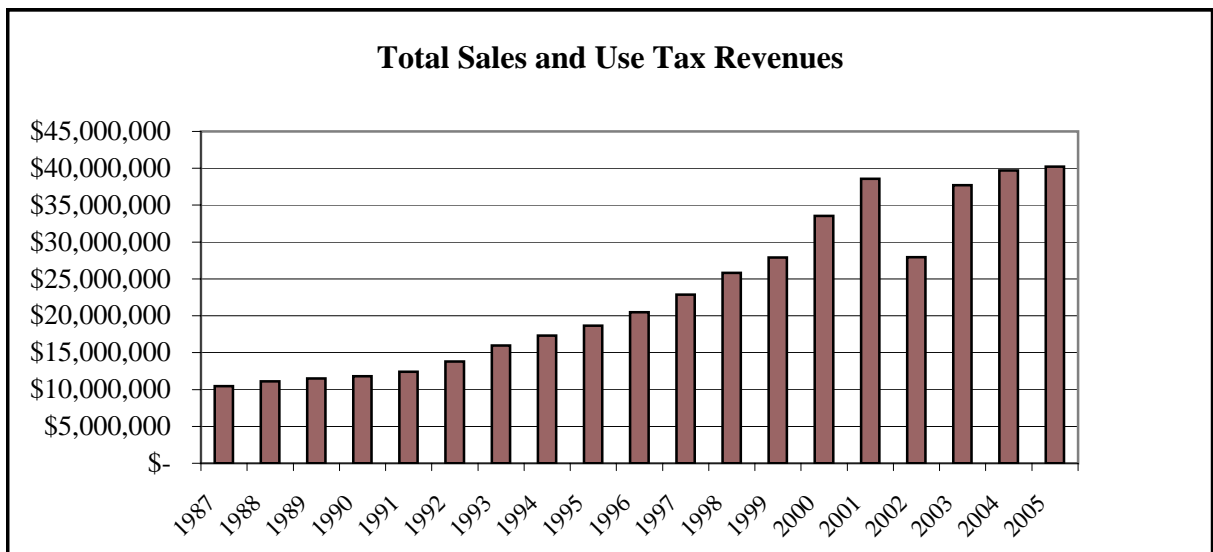
Year	Assessed Valuation	Property Tax Collections
1980	\$125,726,710	\$1,360,948
1981	\$133,587,360	\$2,245,793
1982	\$136,769,160	\$2,305,653
1983	\$139,850,010	\$2,070,729
1984	\$164,747,490	\$2,284,475
1985	\$181,808,370	\$2,691,411
1986	\$193,584,700	\$2,847,172
1987	\$199,094,450	\$3,151,757
1988	\$380,767,120	\$3,438,334
1989	\$356,237,570	\$3,433,775
1990	\$350,369,980	\$3,419,241
1991	\$351,604,450	\$4,404,613
1992	\$336,210,300	\$4,427,681
1993	\$334,091,510	\$4,402,119
1994	\$346,501,490	\$4,571,526
1995	\$363,335,650	\$4,829,847
1996	\$407,810,560	\$5,426,128
1997	\$439,276,030	\$5,828,717
1998	\$494,230,420	\$6,553,830
1999	\$525,274,160	\$6,879,445
2000	\$621,566,820	\$8,178,935
2001	\$685,915,500	\$9,055,508
2002	\$829,339,690	\$11,009,443
2003	\$867,614,052	\$11,401,817
2004	\$940,330,671	\$12,452,651
2005	\$963,317,110	\$12,734,493



Source: City of Longmont Comprehensive Annual Financial Report

### SALES AND USE TAX REVENUES

Year	General Fund Sales and Use	Public Improvement Fund Sales and Use	Street Fund Sales and Use	Open Space Fund	Total Sales and Use Tax Revenues
1987	\$ 5,718,000	\$ 1,906,000	\$ 2,828,000	*	\$ 10,452,000
1988	\$ 6,088,000	\$ 2,029,000	\$ 3,012,000	*	\$ 11,129,000
1989	\$ 6,312,000	\$ 2,104,000	\$ 3,105,000	*	\$ 11,521,000
1990	\$ 6,430,000	\$ 2,143,000	\$ 3,212,000	*	\$ 11,785,000
1991	\$ 7,675,000	\$ 1,354,000	\$ 3,386,000	*	\$ 12,415,000
1992	\$ 8,542,000	\$ 1,507,000	\$ 3,769,000	*	\$ 13,818,000
1993	\$ 9,827,000	\$ 1,734,156	\$ 4,335,000	*	\$ 15,986,156
1994	\$ 10,704,416	\$ 1,889,015	\$ 4,722,537	*	\$ 17,315,968
1995	\$ 11,547,190	\$ 2,037,737	\$ 5,094,347	*	\$ 18,679,274
1996	\$ 12,663,383	\$ 2,234,715	\$ 5,586,786	*	\$ 20,484,884
1997	\$ 14,133,223	\$ 2,494,097	\$ 6,235,245	*	\$ 22,862,565
1998	\$ 15,960,210	\$ 2,816,508	\$ 7,041,269	*	\$ 25,817,987
1999	\$ 16,795,534	\$ 3,504,118	\$ 7,612,369	*	\$ 27,912,021
2000	\$ 20,114,999	\$ 4,266,818	\$ 9,413,181	*	\$ 33,524,998
2001	\$ 21,299,654	\$ 4,863,962	\$ 9,811,356	\$ 2,601,749	\$ 38,576,721
2002	\$ 11,022,970	\$ 4,911,004	\$ 9,478,730	\$ 2,527,661	\$ 27,940,365
2003	\$ 20,858,864	\$ 4,716,398	\$ 9,590,725	\$ 2,557,525	\$ 37,723,512
2004	\$ 22,905,289	\$ 4,022,853	\$ 10,098,053	\$ 2,692,816	\$ 39,719,011
2005	\$ 23,181,626	\$ 4,090,876	\$ 10,227,189	\$ 2,727,250	\$ 40,226,941



Source: City of Longmont Comprehensive Annual Financial Report