

## 7. GRAFITTI



- ◆ It is important to remove graffiti as soon as possible, because if left in place, graffiti adds to the deterioration of neighborhoods, and may invite a response from rival gangs or taggers.
- ◆ When an individual or neighborhood becomes involved in active, frequent removal of graffiti, it sends a message to offenders that their destructive graffiti and other activities will not be tolerated.
- ◆ The City is asking for your help in removing the graffiti that has been placed on your property.
- ◆ You may choose to remove the graffiti yourself, in a manner you deem most appropriate for your situation.
- ◆ If you are unable to remove the graffiti yourself, the City is prepared to offer you limit assistance with labor and materials.
- ◆ There are limitations on what style of removal the City can offer.

## ADDITIONAL NUMBERS TO CONTACT:

- ◆ **City of Longmont Solid Waste**  
303-651-8416—Fee involved – call for details
- ◆ **Eco-Cycle**  
303-772-7300—Call for details  
Electronics only taken during special events

## FOR MORE INFORMATION, PLEASE CALL CODE ENFORCEMENT AT:

**303-651-8761**

**Or**

**303-651-8444**

## MISSION STATEMENT

**The City of Longmont's Code Enforcement is dedicated to enforcing codes and proactively engaging the community in a partnership of problem solving to establish a sense of safety and self reliance that results in more beautiful neighborhoods and enhances our quality of life.**



## HOW TO CONTACT US

- ◆ Call us at **303-651-8761** or **303-651-8444**
- ◆ Visit us at 350 Kimbark Street, Longmont, CO 80501
- ◆ Check out our website at:  
[www.ci.longmont.co.us/code\\_enf/](http://www.ci.longmont.co.us/code_enf/)

Working for a Better  
Community

# Common Code Violations



Code violations can lead to court appearances, fines and in some cases jail time. They also affect the appearance and safety of our community. So, it is important that you know about the Codes and Ordinances that affect your property. To Help you learn more about these issues we have put together a list of most common violations that are cited and an explanation of the Code or Ordinance that they relate to.

## Top 7 Code Violations

### 1. WEEDS/OVERGROWN VEGETATION

- ◆ No weeds, grasses or other unsightly vegetation is allowed to grow over 12 inches in height.
- ◆ Hedges and shrubs must be maintained at a height of 36" or less at the intersection of two streets.
- ◆ Hedges, shrubs and trees must be trimmed to a minimum of 8 feet above a sidewalk and 15 feet above the street.
- ◆ Vegetation and trees must be trimmed so as not to impair or obstruct the travel of pedestrians on public walks.



### 2. INOPERABLE/UNLICENSED VEHICLES AND/OR VEHICLE PARTS



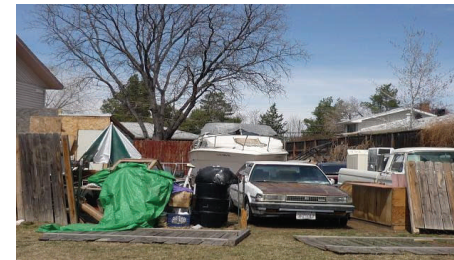
- ◆ A junk/inoperable vehicle is a vehicle that does not have valid, unexpired plates.
- ◆ Or the vehicle may be wrecked, damaged or substantially dismantled to the extent that such vehicle is inoperable, or if designed to be capable of moving itself when in proper repair, is incapable of being moved under its own power in its existing condition; or may have any number of flat tires.
- ◆ Vehicles with any combination of these conditions may not be parked or stored on the public street for any length of time and are subject to immediate removal.
- ◆ Only one junk/inoperable vehicle may be stored on private property if it is stored inside a garage or completely covered with an opaque car cover.

### 3. JUNK, TRASH AND DEBRIS

- ◆ Junk, trash and debris cannot be left in the yard and must be properly disposed of.
- ◆ This includes auto parts, appliances, furniture, building materials, tires, discarded paper, cardboard, plastics, tree trimmings and fallen limbs.

### 4. OUTDOOR STORAGE

- ◆ Outdoor storage is prohibited.
- ◆ Generally, any equipment, materials or furnishings that would ordinarily not be used outdoors may NOT be stored outdoors.
- ◆ For example, you may NOT keep indoor, upholstered furniture, household appliances, auto parts or building materials outside.
- ◆ You may store barbecue grills, lawn furniture, garden hoses, garden tools, and outdoor play equipment for children or lawn mowers outside in an orderly fashion.
- ◆ It is unlawful for any person to place, leave, dump or permit to accumulate any materials, junk, debris or garbage that may afford food or harborage for rats.



### 5. COMMERCIAL/ RECREATIONAL EQUIPMENT

- ◆ Generally, commercial equipment and commercial vehicles are allowed to be in a residential area for up to 72 hours at a time.
- ◆ Overweight commercial vehicles are restricted from residential areas unless in the process of deliveries and must otherwise stay to the

approved truck routes in the city.

- ◆ Recreational vehicles, equipment and trailers may not be parked on the street for more than 72 hours and may not be parked within 20' of the sidewalk in the front yard or side yard on a corner lot.

### 6. PARKING ON THE LAWN

- ◆ Parking is permitted for passenger vehicles and motorcycles in residential lots only on a legal driveway or parking area.
- ◆ A driveway must be constructed with approved parking surfaces, such as concrete or asphalt.
- ◆ Auxiliary parking areas may be surfaced with concrete, asphalt or gravel.
- ◆ Only 40% of the front yard may be developed for parking areas, the remaining yard area is to be maintained with live vegetation.
- ◆ Vehicles in front yards must be parked on legally recognized and approved parking surface.
- ◆ **Parking on the lawn or dirt is not allowed in the front yard.**

